



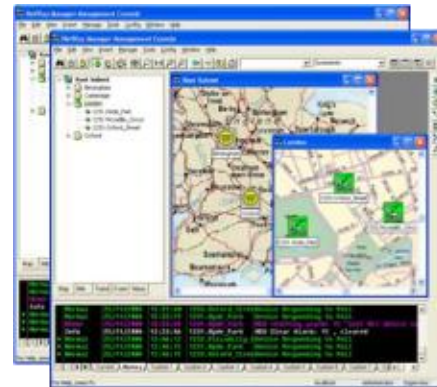
The scalable network management solution

Features

- Network status in real time
- Based on open standards
- Easy integration with third party SNMP-based elements
- User friendly interfaces
- Scalable
- Robust
- Proven with Allgon Microwave products since 2001

NetWay Manager

- Optional value adding NetTools
The NWM NetTools enables you to manage your entire network in a more efficient way. The following add-on modules are easily available by a right hand mouse click.
- Software Downloader (SD)
Used for downloading new software to all, or selected Allgon Microwave devices in the network, which assures a safe and scheduled download with software swapping.
- Network Data Collector (NDC)
Used for creating a number of network reports. You can either use the predefined or create customized reports.
- Network Configurer (NC)
Used for changing common parameters for all, or selected network elements.
- Configuration Backuper (CB)
Used to create a reflection of the configuration in a



Overview

The NetWay Manager software is the generic network management platform for Advantech Wireless Microwave products. The Enterprise edition of NetWay Manager is optimized for small to medium-sized networks and operates in a single user environment.

It is designed to centrally monitor and manage critical network interconnected devices. The system keeps track of the equipment status in real time and ensures the quality of network operations. Time, software and other critical parameters are easily synchronized through a complete network. For even larger networks and remote consoles the NetWay Manager Telecom edition is available.

The software can act as a feeding node to upper layer Network management systems.

NetWay Manager Enterprise edition can be used both as a Network Element Manager and as a Network Management System giving you a total overview of all network elements with standard protocols. NetWay Manager Enterprise edition is scalable in order to meet different levels of customer requirements. NetWay Manager includes functionality for Fault Management, Configuration Management, Performance Management and Security Management.

The following value-adding NetTools modules are available:

- Software Downloader
- Network Configurer
- Network Data Collector
- Configuration Backuper

NetWay Manager

Specifications

Common functions

- Compliant with TMN model in ITU M.3400
- Single user support
- SNMP v1, v2, v3
- ICMP echo (ping)
- GUI and script interfaces
- Maximum 1000 nodes manageable*

Fault Management functions

- Alarm/event severities according to ITU X.733
- Real-time alarm/event logs
- Global alarm/event log
- Network element specific alarm/event log
- Acknowledgeable alarms/events
- Forwarding of alarms to northbound Network Management System
- Alarm filtering
- Severity reconfiguration (including colors)
- Forwarding via SNMP or e-mail
- Configurable alarms at reached thresholds
- Node link failure alarm

Configuration Management functions

- Launch element manager on individual basis
- Software Downloader**
- Configuration Backuper**
- Network Configurer**
- Network Data Collector**
- MIB Browser
- Importable real maps
- Hierarchy views
- Automatic network element discovery

Performance Management functions

- Collect performance logs from network elements
- Real time performance collection and graphics
- Management traffic statistics
- Payload traffic statistics

Security Management Functions

- User configurable views
- Unique user/password per user
- SNMP v3

System Requirements

- CPU 600 MHz
- Memory 128 MB
- Hard drive available space 500 MB
- Operating system Windows 2003/XP/2000

Standards

- RMON RFC 2819 RMON
- SNMP v1, v2, v3 RFC 1157 SNMP RFC 1442-1450 SNMP v2 RFC 3410-3418 SNMP v3
- SNMP v3 with SHA/MD5 authentication and DES encryption
- Pre-compiled MIB II and Enterprise MIBs (RFC 1213 MIB II)
- ASN.1 MIB Compiler/Browser included

* For more than 1000 nodes NWM Telecom edition is available

** Optional modules

NORTH AMERICA

USA

Tel: + 1 703 788-6882
Fax: +1 703 788-6511
info.usa@advantechwireless.com

CANADA

Tel: +1 514 420-0045
Fax: +1 514 420-0073
info.canada@advantechwireless.com

EUROPE

UNITED KINGDOM

Tel: +44 1480 357 600
Fax: +44 1480 357 601
info.uk@advantechwireless.com

RUSSIA & CIS

Tel: +7 495 971 59 18
info.russia@advantechwireless.com

SOUTH AMERICA

USA

Tel: + 1 703 788-6882
Fax: +1 703 788-6511
info.latam@advantechwireless.com

BRAZIL

Tel: +55 11 3054 5701
Fax: +55 11 3054 5701
info.brazil@advantechwireless.com

An ISO 9001: 2008 Company



Ref: PB-NWAY-11094